



ROUTE EXPLANATION

LEG 7

TC45 to TC46

Novice

TC 45 (29805515→W) to TC 46 (265542)

CRO

56 29 28 28 56 29 55 29 54 28 53 53 27 54

Expert

TC 45 (29805515→W) to TC 46

CRO

1 & 7



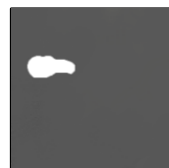
3 & 5



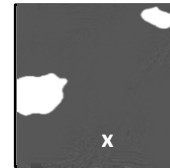
9



11 & 13



15



It is grid lines to cross for the Novices, with a couple of occasions where there is more than one option and therefore necessary to look ahead. For example, for the second 56 you need to see which of the two options would (or could) next cross GL29. That leads you to the easterly option, as the western route would take you to GL28 or GL55 next.

There is a little trick at the end which you have to spot to avoid arriving at TC46 from the wrong direction. The more obvious route would be to go XSO in GS2753 then XR at the next junction, and arrive at TC46 from the WSW. But XL at the first crossroads, then XR, XR and XL to approach TC46 from the ENE is just shorter, crosses all of the GLs in the correct order, and is therefore the correct route.

Experts also have to look out for that trick, but first of all have to identify these grid squares, and to pass through them in the numerical order shown (with only the odd numbered grid squares shown). On this map, the background is basically a relief map, with the colouring changing at 50m intervals. The black shading represents the area within the contours from 100m to 150m, coloured green on the map.

The location of TC45 and TC46 are also shown by the crosses in the first and last grid squares, and accurate plotting of the location of TC46 is the key to getting the correct direction of approach at that control. It doesn't help that the squares in the instruction may not print out at the same scale as the map. Organisers wouldn't do that on a real rally, would they?

