



ROUTE EXPLANATION

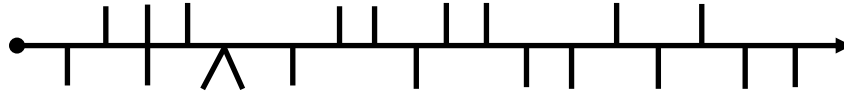
LEG 9

TC67 to TC68

Novice

TC 67 (171557→S) to TC 68 (175538)

CRO

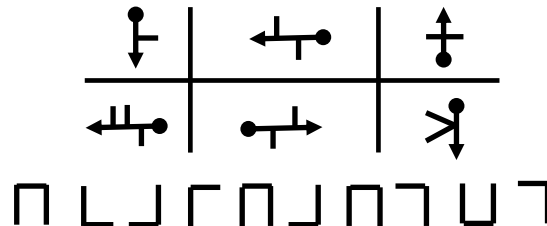


Expert

TC 67 (171557→S)

to TC 68

CRO



Straight herringbones for both classes here, but the Experts have to build theirs from the segments first. The shapes in the Expert instruction denote the segments of the grid, so for example the first shape refers to the centre segment on the bottom line, and the second shape refers to the top right segment. Following this through, and making sure you get the correct orientation of the herringbone segments, should lead to a herringbone the same as in the Novice instruction.

There is nothing particularly tricky about the herringbone as long as you take care around the two crossroads, and of course spot that the instruction is CRO.

